



UNIVERSITY OF  
**GEORGIA**

Facilities Management Division

# Electrical Safety

# Objectives

- u Improve your ability to recognize actual & potential electrical hazards
- u Improve your understanding of the National Electrical Code & how it ties in to OSHA's electrical standards
- u Identify common electrical violations on campus

# Common Electrical Hazards

- u Shocks
- u Burns
- u Explosions
- u Fires



# Common Electrical Violations

- u Not guarding of live parts
- u No grounding path
- u Conductors not protected from abrasion
- u Electrical boxes without covers
- u Permanent use of flexible cords and cables
- u No grounding of cord and/or equipment
- u No identification of disconnecting means & circuits
- u No announcement of locations with live parts

# Training

- u Training shall be of the classroom or on-the-job-type.
- u The degree of training provided shall be determined by the RISK to the employee.
- u Qualified Persons – those persons who have training in avoiding the electrical hazards of working on or near exposed energized parts.
- u Unqualified Persons – those with little or no such training.

CE Lighting  
P.O. Box 1000  
New York, NY 10001

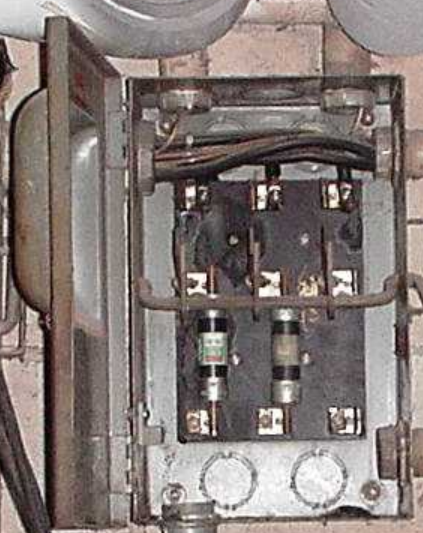
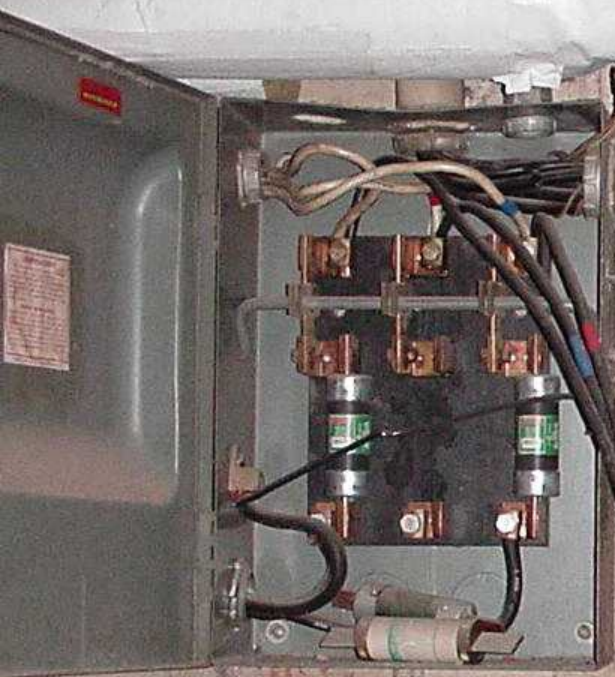
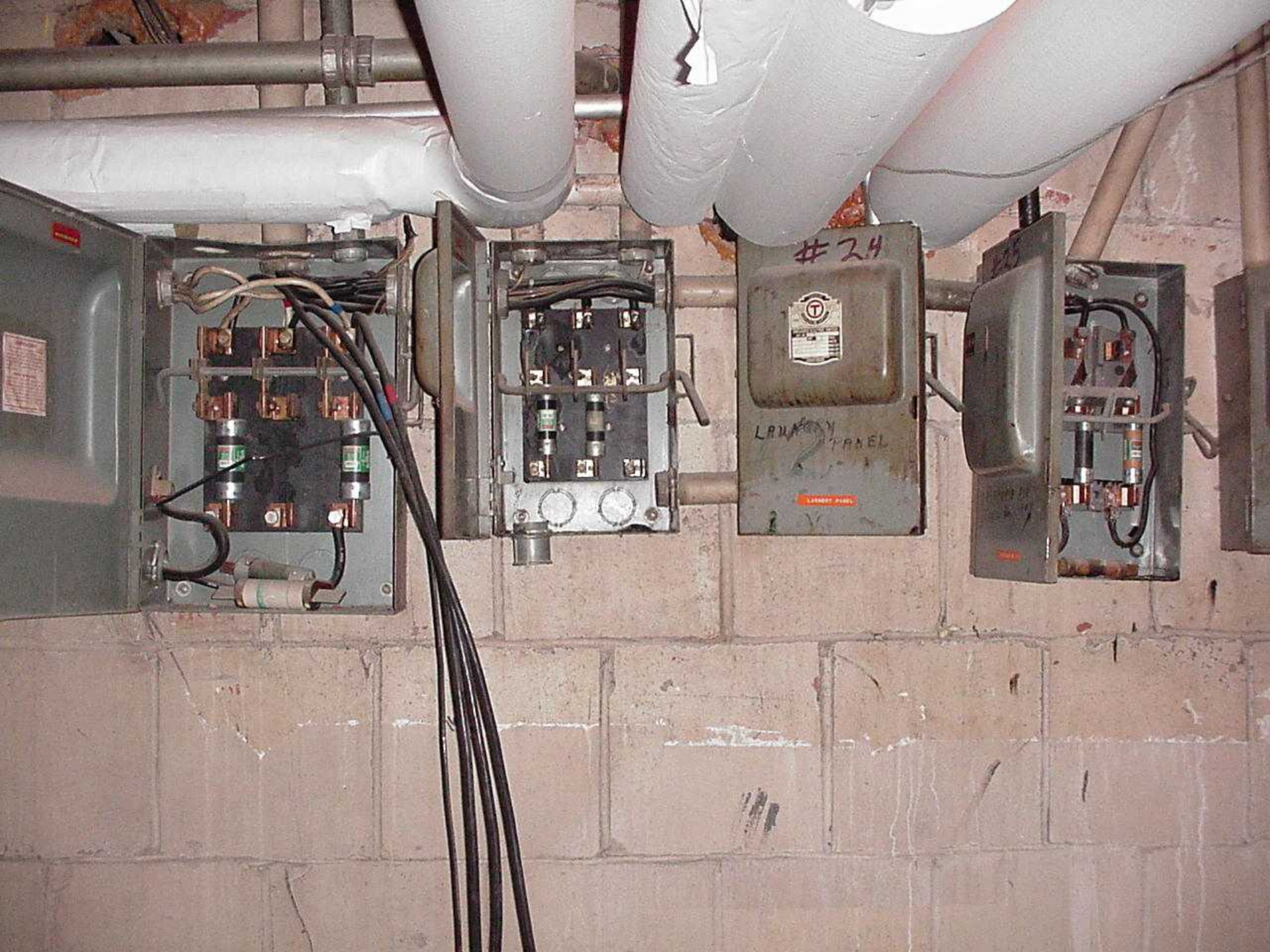
GLASS  
HANDLE WITH CARE

ASS  
WITH CARE

Ballast



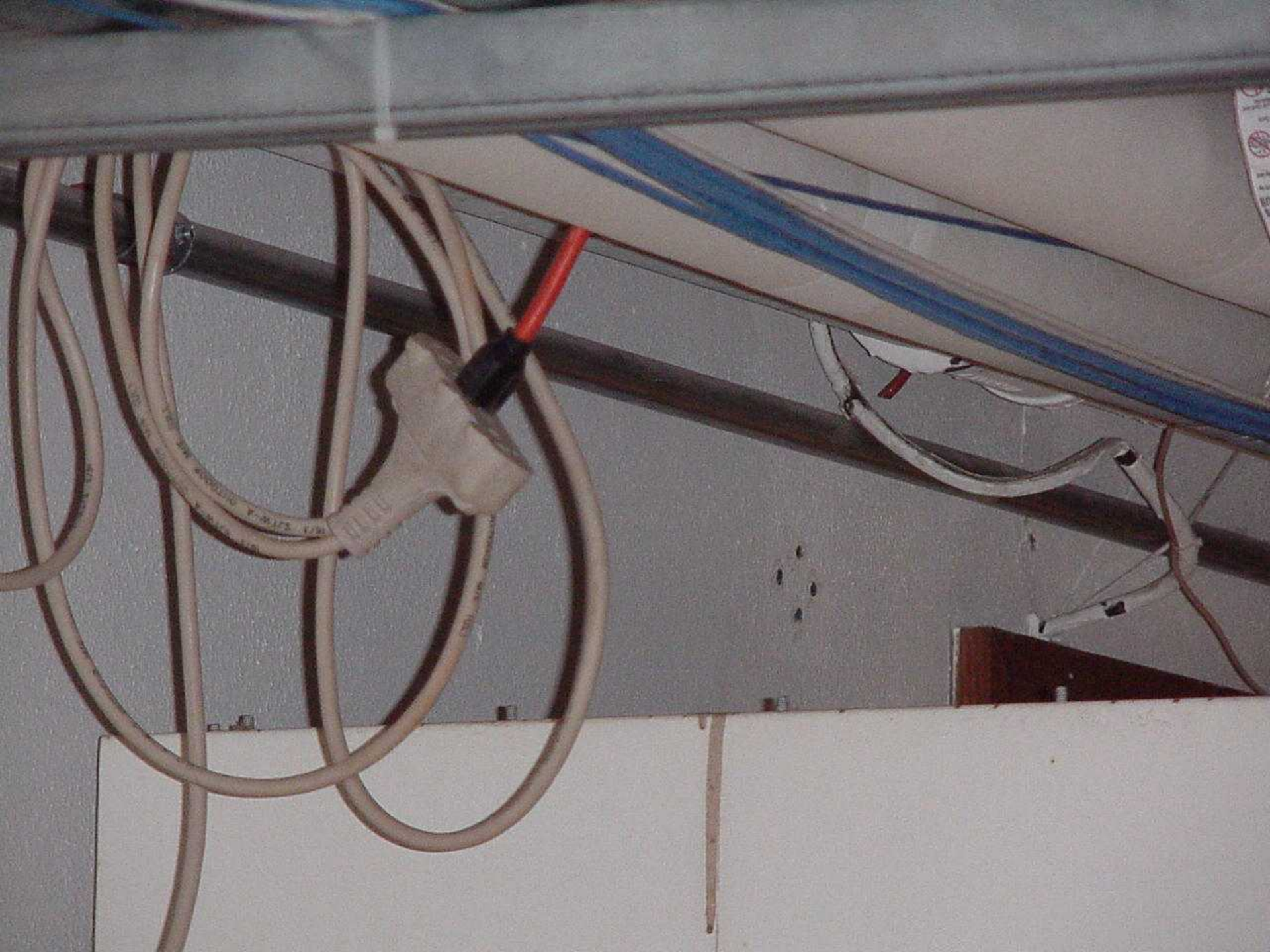
Subent  
229

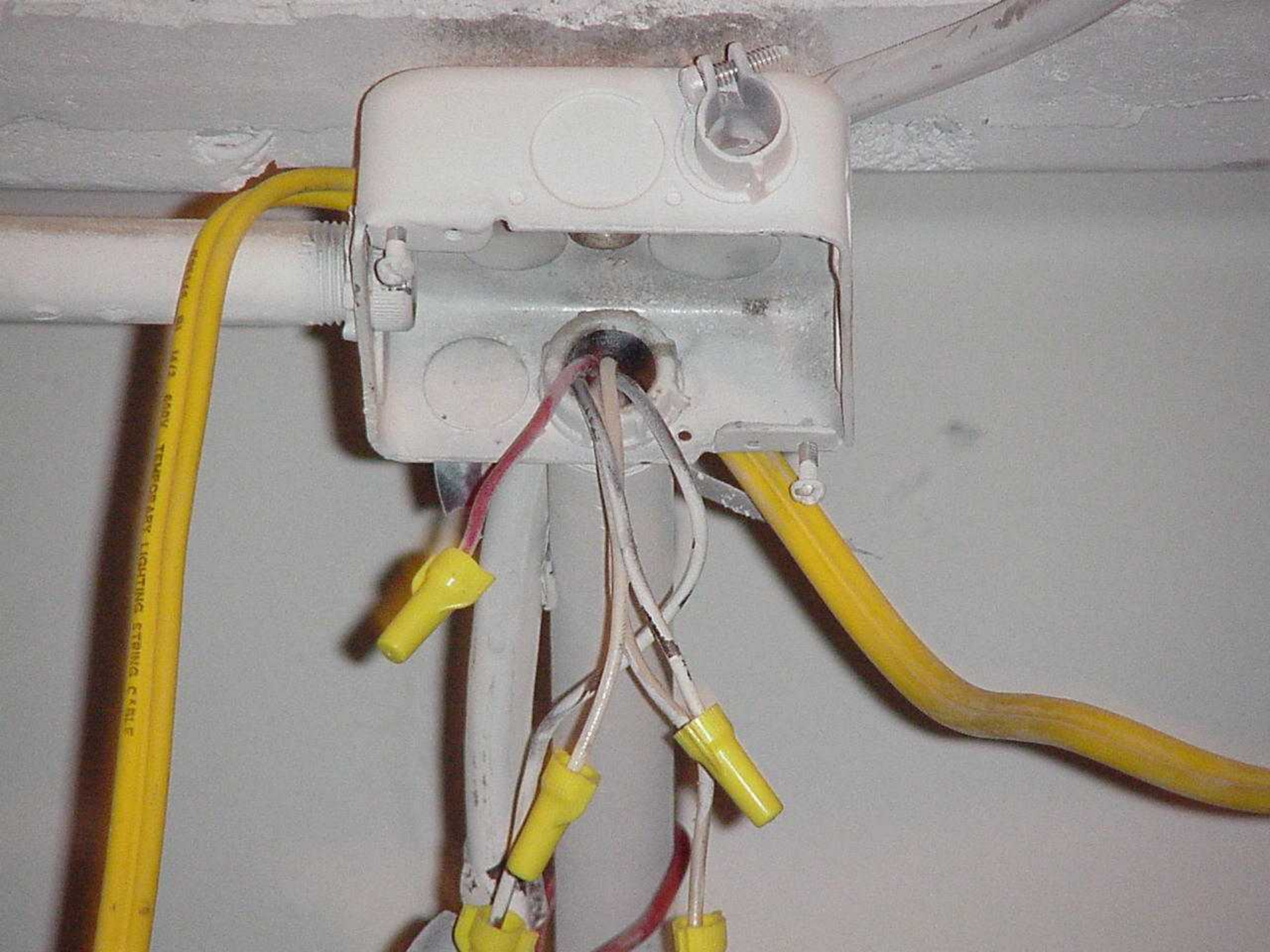


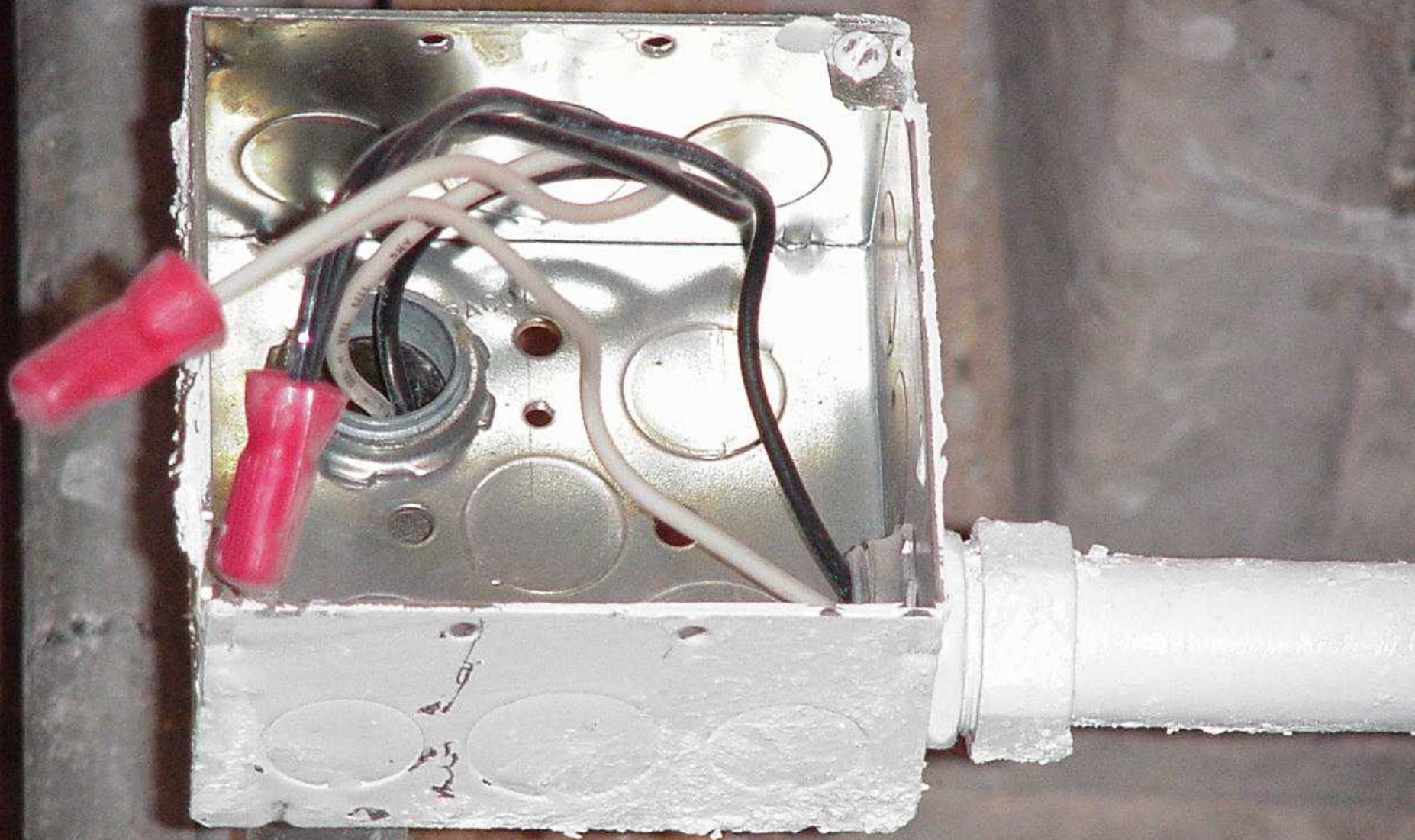


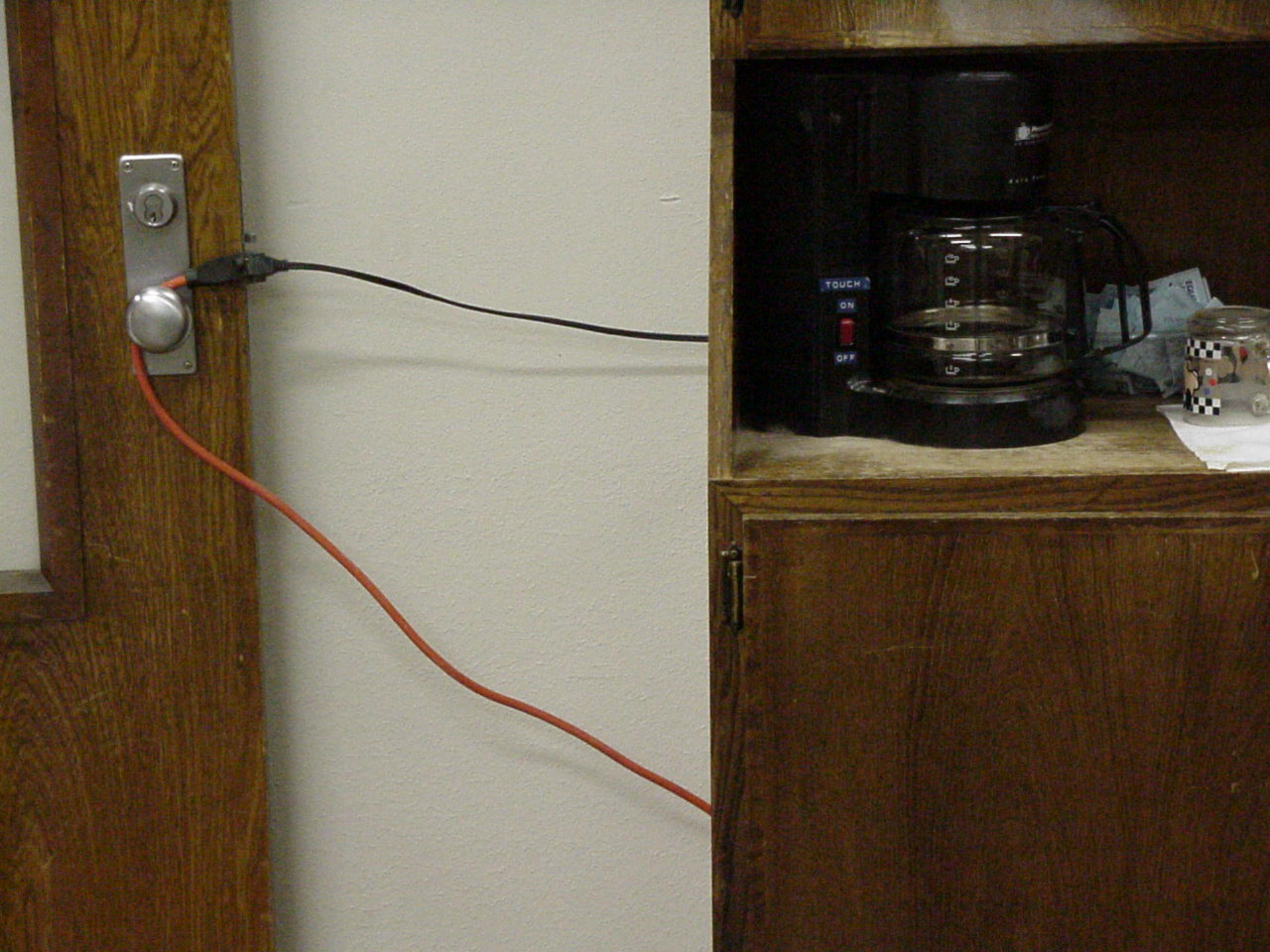












# ***PLEASE REPORT ANY UNSAFE CONDITIONS***

For repairs or a safety evaluation, please  
contact FMD Work Control at:

***7:30 AM - 5:00 PM (706) 542-7456***

***After hours (706) 542-2200***

Or

***[www.fmd.uga.edu/WRC](http://www.fmd.uga.edu/WRC)***

